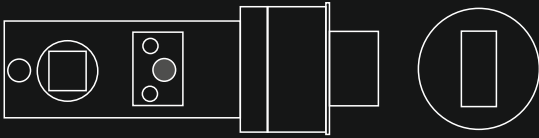
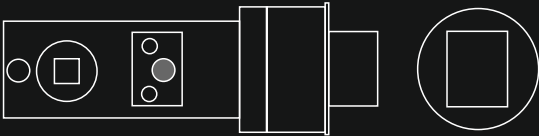


## Easy Latch



For use with sprung lever handles only.



See full details next page

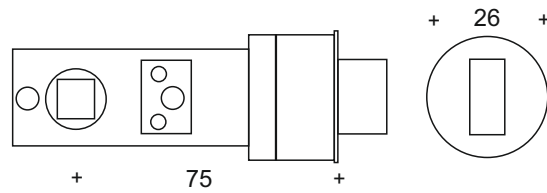
Finishes : SS, PS, PB, BZ

Product Code

20.1791

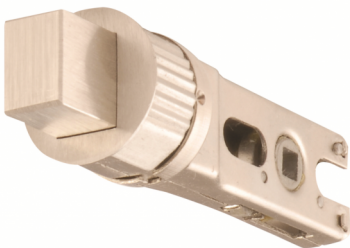


For use with sprung lever handles only.

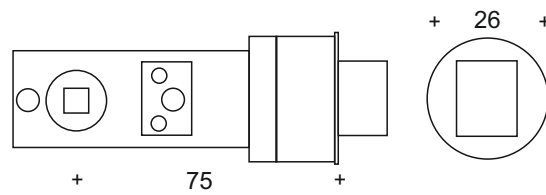


8mm follower for 8mm spindle

SPEC.46772



For use with thumb turn.



5mm follower for 5mm spindle

Code Illustration

20.1791.SS = Satin stainless steel

Finishes : SS, PS, PB, BZ