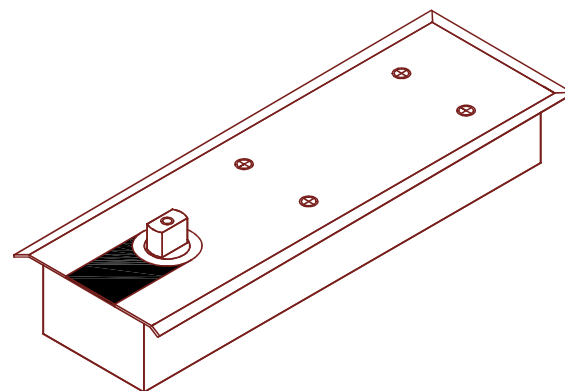
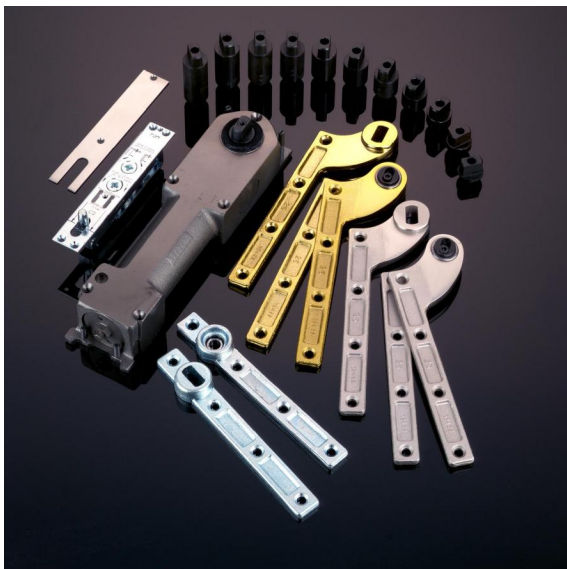


The Integral range of floor spring pivots are made in England and have been selected for their reliability, performance and high efficiency up to 90% making them the ideal answer for compliance with DOC M BS8300 & EN1154.



20.1645.SS

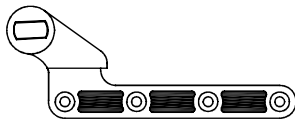
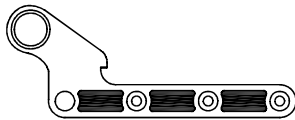
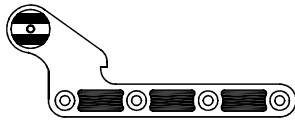
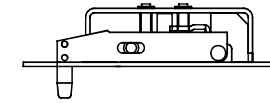


see page 2 for details

The Integral range of floor springs and pivots are made in England and have been selected for their reliability, performance and high efficiency up to 90% making them the ideal answer for compliance with DOC M BS8300 & EN1154.

Key Features :

- Hydraulically controlled closing from 180°.
- Power adjustable spring strength.
- Variable intensity backcheck automatically adjusted with spring strength selected maximising at 90°.
- Minimal backset 39mm to 51mm.
- Interchangeable pivot assembly to enable unit to be mounted parallel or 90° to door frame.
- Standard spindle insert gives 8mm clearance from cover plate to underside of door.
- Certifire approved and CE marked.

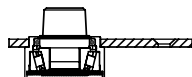
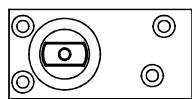


1640.SS

Integral satin stainless steel, adjustable double action top centre with intumescent infill, complete with bearings for low friction and unique lateral adjustment and satin stainless steel bottom strap with intumescent infill.

1641.SS

Integral satin stainless steel, 25mm offset single action top centre with intumescent infill, complete with bearings for low friction and unique lateral adjustment and satin stainless steel, 25mm offset single action bottom strap with intumescent infill.



1642.SS

Integral satin stainless steel finish floor pivot, 92 x 45 x 4mm, for use with single or double action straps and top centres, 400kg weight capacity.

1645.SS

Integral floor spring unit 300 x 100 x 50mm 400kg weight capacity, adjustable loose box, power 1-4 proportional backcheck, speed control, delayed action, unique highly efficient (up to 90%) low friction mechanism, self-centring cam and full 180° operating cycle, supplied with a satin stainless steel cover plate.

1646.SS

Integral floor spring unit 300 x 100 x 50mm 400kg weight capacity, adjustable loose box, power 1-4 proportional backcheck, speed control, hold open at 90°, unique highly efficient (up to 90%) low friction mechanism, self-centring cam and full 180° operating cycle, supplied with a satin stainless steel cover plate.

1647.SS

Integral floor spring unit 300 x 100 x 50mm 400kg weight capacity, adjustable loose box, power size en 4, speed control, electromagnetic hold open 24v DC unique highly efficient (up to 90%) low friction mechanism, self-centring cam, supplied with a satin stainless steel cover plate.

1648

Integral floor spring mounting box for raised floor installations.

1649

Integral floor spring pivot extensions are available in 5mm increment sizes 13/18/23/28/33mm. (eg. Specification example 1649.33)

