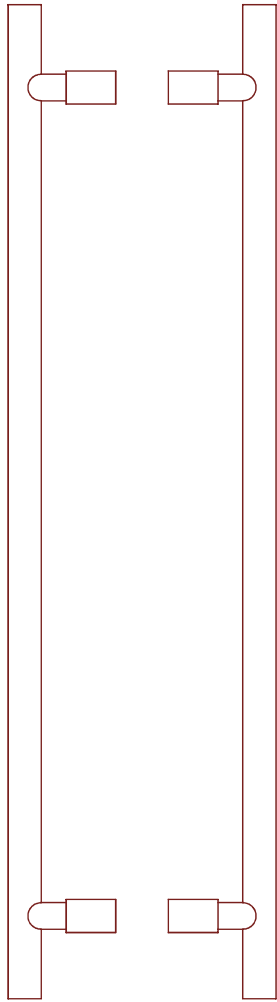
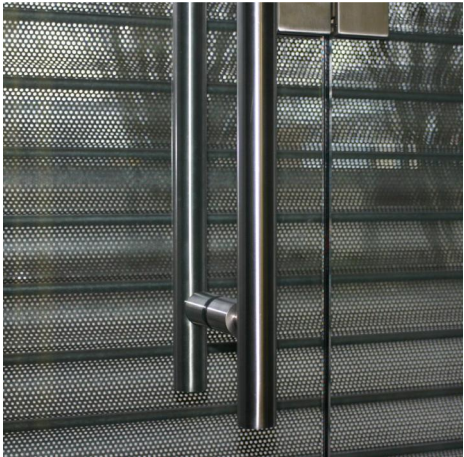
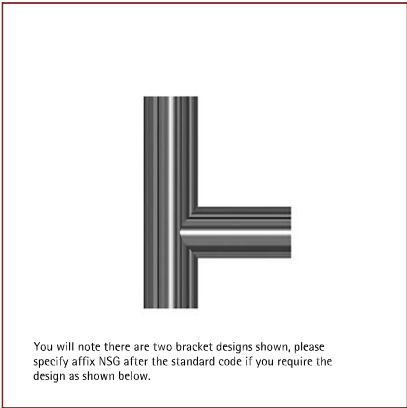


The 20 range entrance door pull handles, our standard sizes are as noted on the drawing, but as we well know there is no such thing as standard when it comes to entrance doors, whether timber, glass or metal. So, please be assured that any size can be economically produced in our factory to your exact requirements.



see details on page 2

trapex hardware ltd : 20 range

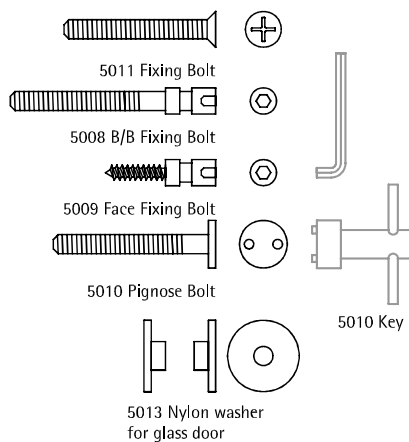
The 20 range entrance door pull handles, our standard sizes are as detailed, but as we well know there is no such thing as standard when it comes to entrance doors, whether timber, glass or metal - any size can be economically produced in our factory to your exact requirements.

You will note there are two bracket designs shown, please specify affix NSG after the standard code if you require the design as shown below.

NSG
Alternative Bracket



eg: code/dia/finish/nsg



Pull Handle Specification Examples

Code/Dia/Finish

- Pair of B to B fixing pull handles

1 No 5020.20.SS
1 No 5021.20.SS
2 No 5008
(1 No 5013 If glass door)

- Single bolt through pull handle

1 No 5020.20.PS
2 No 5011
(Alternative pig nose bolt 5010)

- Single face fixing pull handle

1 No 5017.16.SS
2 No 5009

FINISHES :

SS = Satin Stainless Steel.
PS = Polished Stainless Steel.

